



Input Output Transition Panel (IOTP)

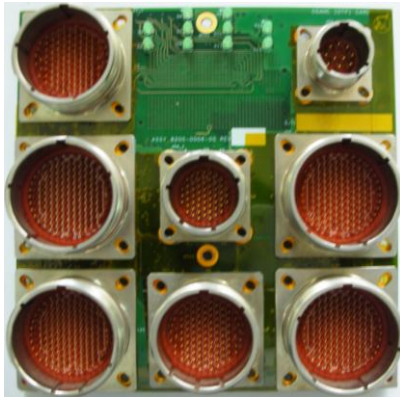


Figure: IOTP1



Figure: IOTP-2

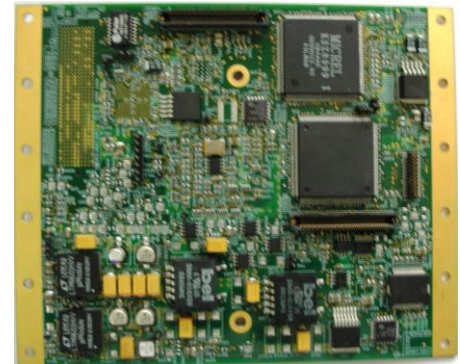


Figure: IOTP-3

Features:

- Consists of three cards IOTP-1, IOTP-2 & IOTP-3 which are interconnected through multi-pin connectors for signal transfer
- All I/O connections through front panel of IOTP (IOTP-1)
- Eight MIL-C-38999 connectors mounted on IOTP-1 and ten LEDs to indicate health of cards, fault and power off detection
- IOTP-2 connected to VITA-46 backplane and linked to SBC main processor through PCIe

